

PART OF THE N 1/2 OF SEC. 3, T.5N., R.1W., S.L.B.M.

162

# MOUNT OGDEN PARK ESTATES

TAXING UNIT - 183

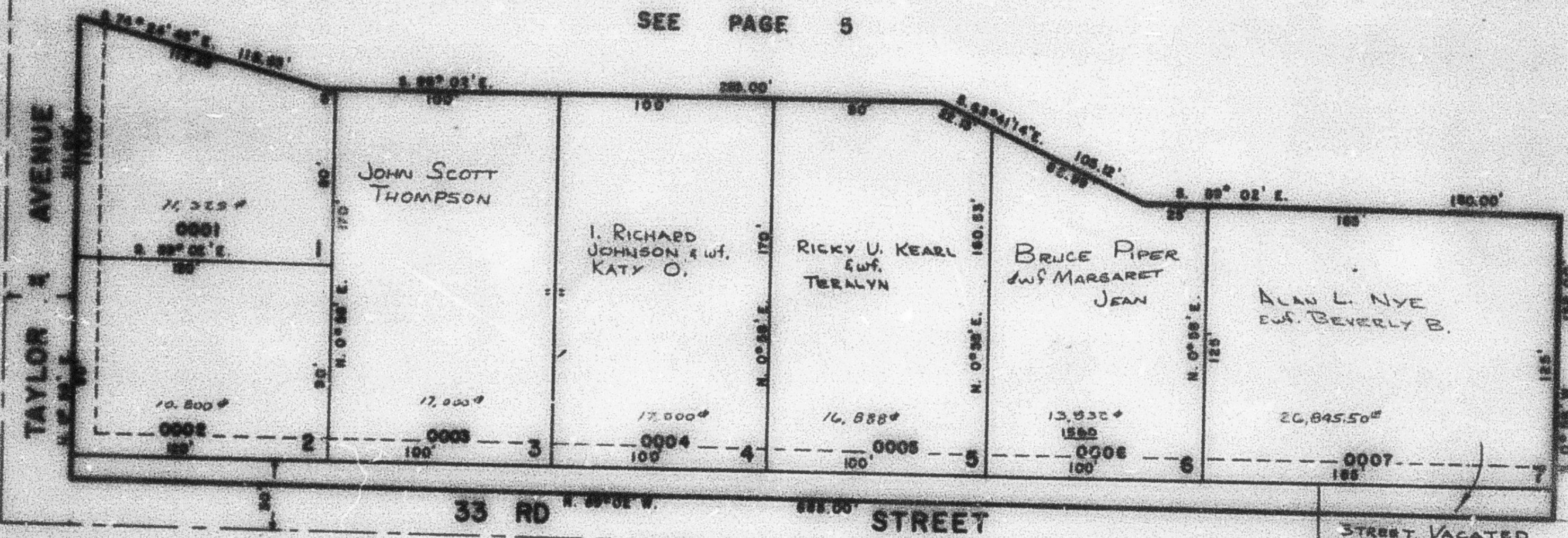
OGDEN CITY

PREP: 05-182

SCALE: 1"=50'

EXCEPT WHERE OTHERWISE SHOWN  
ALL LOTS OWNED BY  
OGDEN CITY

SEE PAGE 5



SEE PAGE 3

SEE PAGE 5

NOTE: 10' UTILITY EASEMENTS AS SHOWN BY DASHED LINES.

FOR COMPLETE ENG DATA SEE ORIGINAL DEED - PLAT IN BOOK 25, PAGE 68

THE 11' STRIP OF LAND ALONG THE SOUTH BOUNDARY IS DECATED FOR STREET PURPOSES.

A.M. 4-81